
Geomative Studio Installation

Geomative Studio software was stored in CD,Copied and released software resource to intended area(document area).the specific documents content was seen as diagram 01:

Name	Date modified	Type	Size
ISSetupPrerequisites	2018/1/25 18:43	File folder	
Geomative_setup.exe	2018/1/9 3:00	Application	9,331 KB

1.1 Pre-Installed Inspection

Geomative studio program has a limited for computer working system,Please follow the check steps closedly.

1.Operating System Inspection

The operating system which supportingGeomative Studio includes:

Windows XP(SP3)version and upper

Windows 7

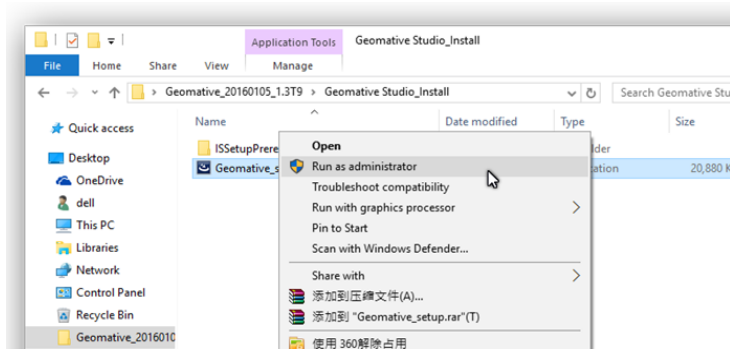
Windows 8

Windows 10

Therefore, before the installation, Check PC operating system ahead.

1) If the operating system is Windows XP, directly double-click Geomative_setup.exe to start the installation program.

2) If the system is Win7 or Win7 upper, right-click Geomative_setup.exe for first, and then select "Run as administrator" among the pop-up menu. See digram as below:



2.Components Working Environment Inspection

1) The program is required to be able to start running Microsoft .NET Framework 2.0 Service Pack 3 and higner.

2) As for online upgradation, please confirm that PC has installed the Internet Explorer components of the operating system, which should support IE7 and IE7 higher version.

3) As for export data,to show as excel file format, you need to be installed on the computerMicrosoft Excel 2007 software or equipped with Microsoft excel driver component driver, the driver needs to support xls, xlsx and ect formats.

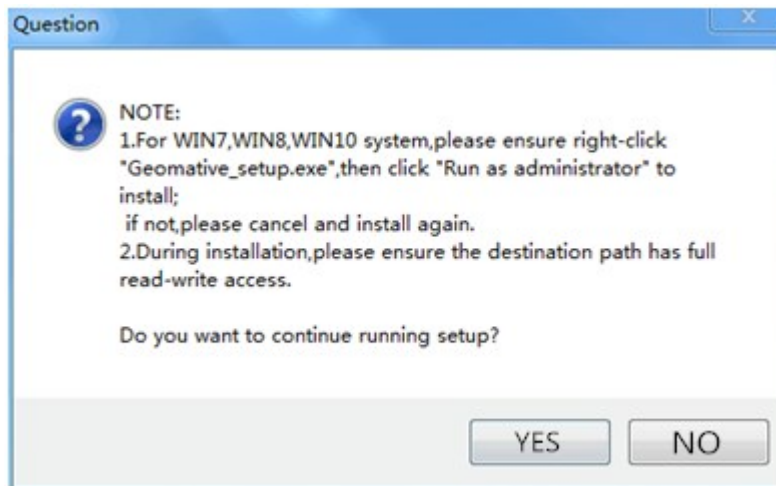
1.2 Installation Steps

1) After the implementation of the installation process, the program interface as shown

below (take win7 system installation as an example):

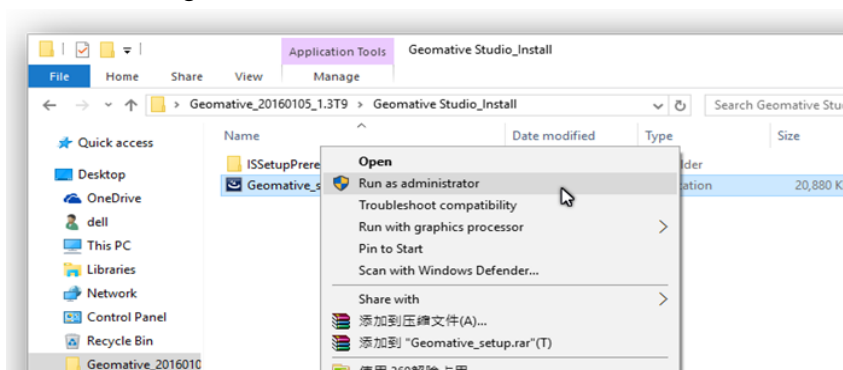


2) After running for some time, it will pop up the installation note automatically:



When this note appears, the user needs to attend the current operating system, if the system is Xp, directly click "Yes" to enter the next page.

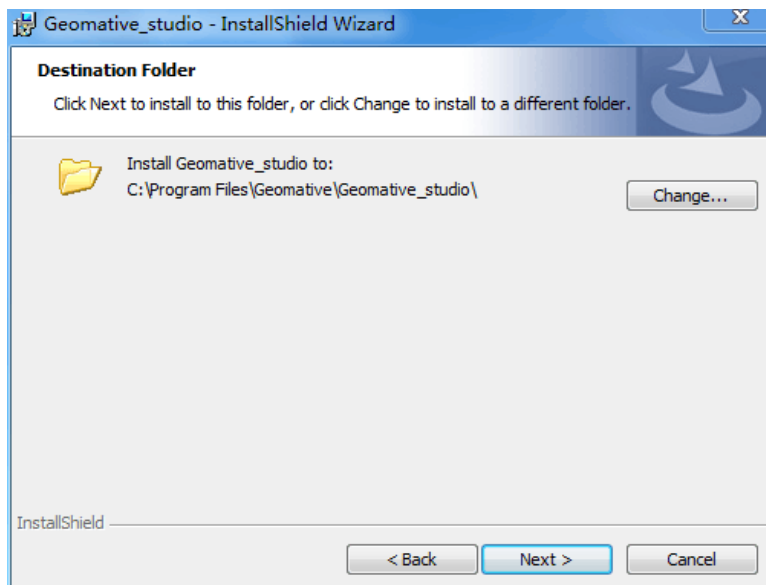
If operating system is Win7 or higher, double check the run of the installation process, is not through clicking the right mouse button and selected "run as administrator" to start the installation process or not, if yes, then click directly "Yes" to the next page. If no, click "No" to exit the installation. Then right click on Geomative_setup.exe, in the pop-up options, selecting "run as administrator". See digram as below:



3) When you select "Yes" in the pop-up Geomative installnote, the next page will pop up and the interface will look like this:

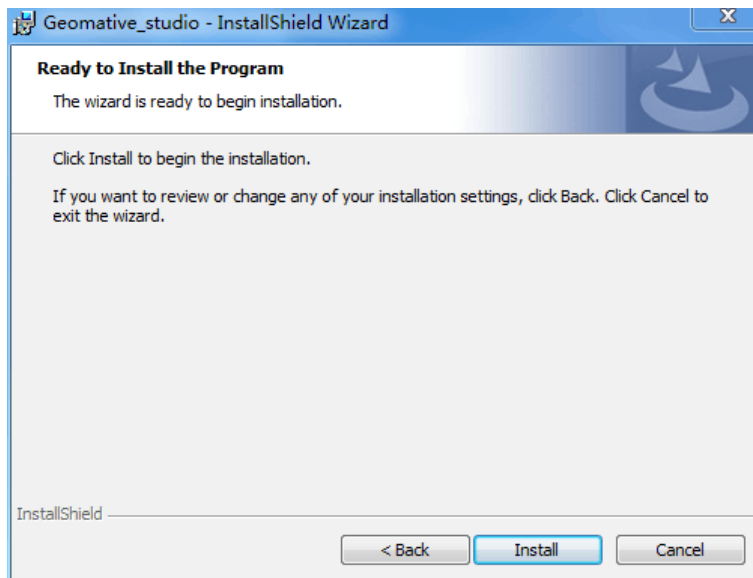


4) Clicking the "Next" button will continue to the next page, See digram as below:



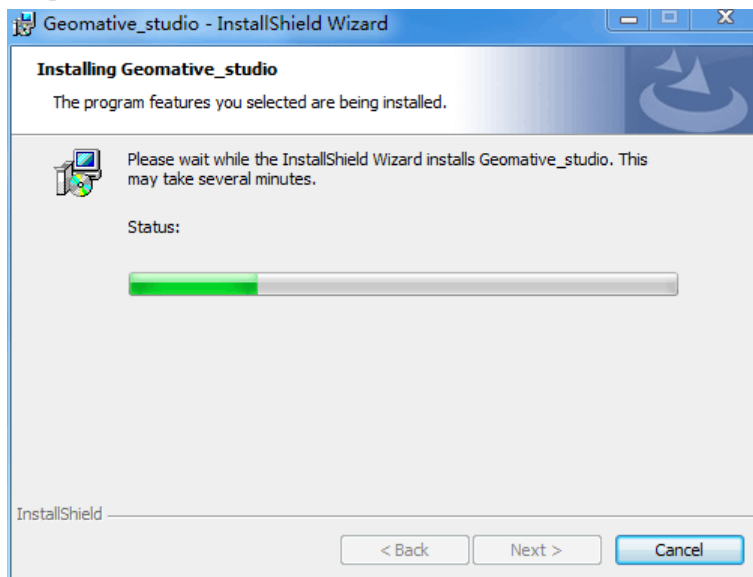
As for install path, the default path for the installer is "C: \ Program Files \ Geomative_steup \", and the user can click "Change" to change the path.

5) After the path is setted, click the "Next" button to enter the next page. The interface is as follows:

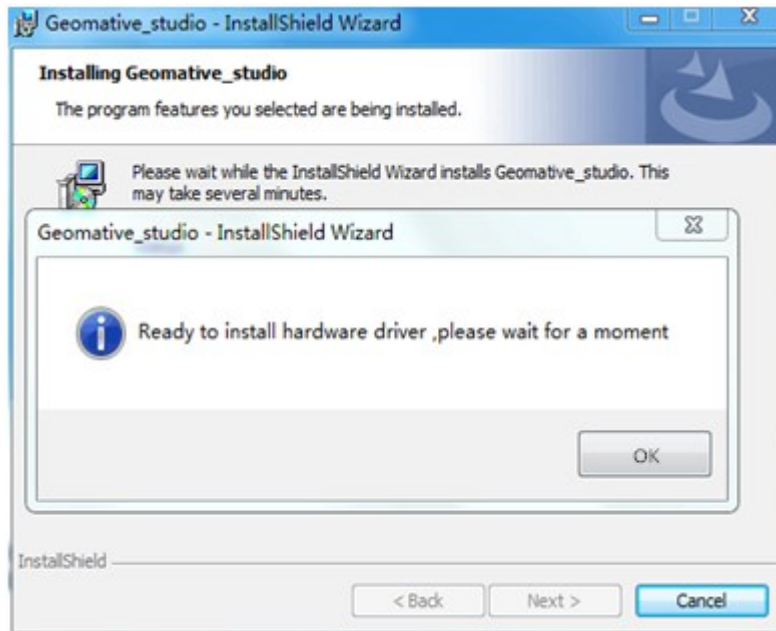


If there is no doubts for whole process, click "Install". If need to modify the path, click "Back".

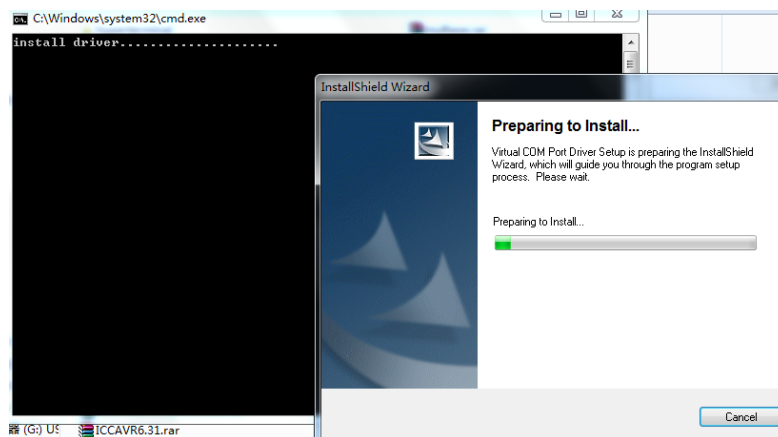
6) Click "Install", the system will automatically install, this process takes a few minutes, please be patient.



7) Run for a while, will pop up the following dialog box, then start to install the GD-20 driver



8) Click the OK button, the driver will start the installation.



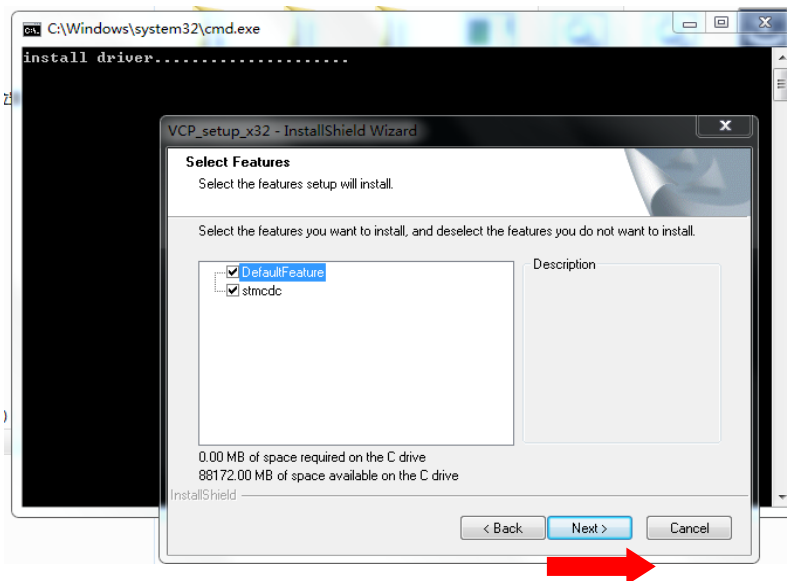
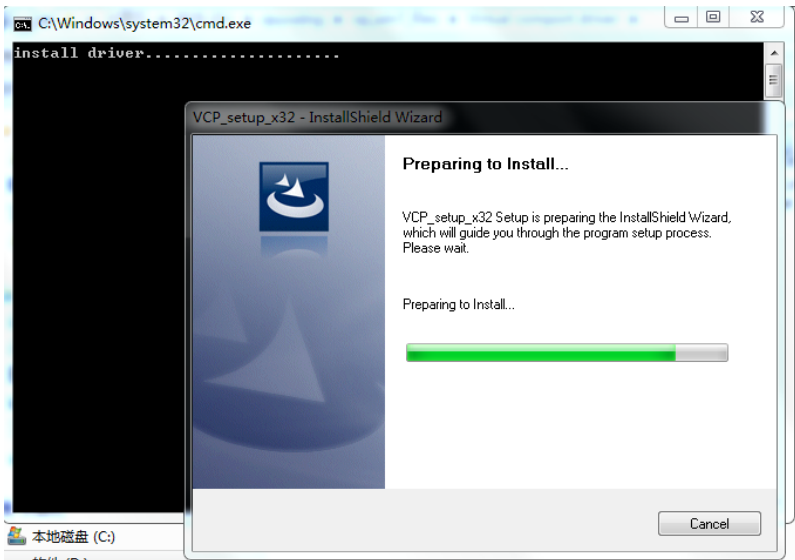
At this point for different operating systems, the installation of the underlying driver will have a different installation interface:

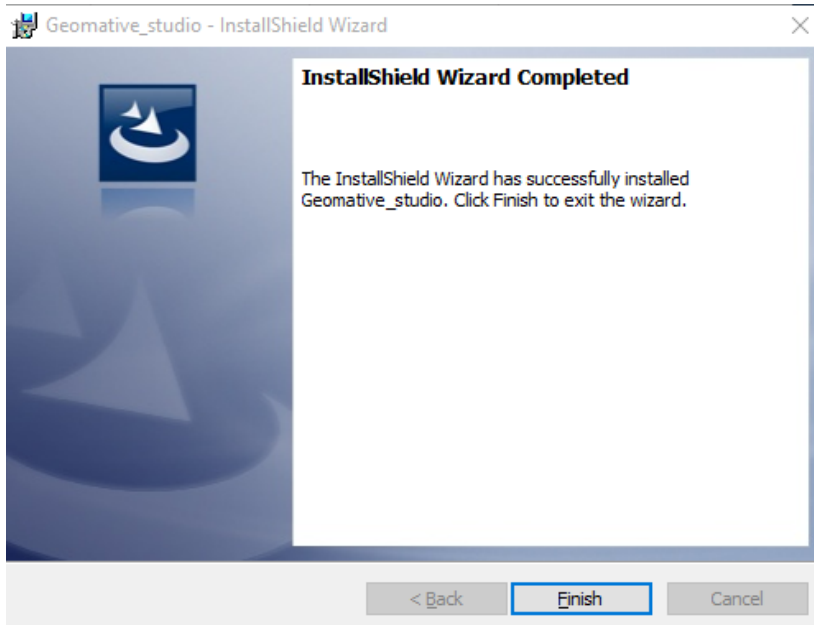
For the XP system, the interface that pops up when the installation is driven is shown below

```
C:\Windows\system32\cmd.exe
install driver.....
已复制      1 个文件。

USB\VID_0483&PID_0001&MI_00\7&1950933D&0&0000      : Removed
1 device(s) removed.
Scanning for new hardware.
Scanning completed.
Device node created. Install is complete when drivers are updated...
Updating drivers for USB\VID_0483&PID_0001&MI_00 from D:\quyuxing\qp_win7_files\
Virtual comport driver\WinXp\stmcxdcXP_VISTA-x86-x64.inf.
Drivers updated successfully.
ROOT\PORTS\0000      : Removed
1 device(s) removed.
Scanning for new hardware.
Scanning completed.
```

For Win7 or higher operating system, install the driver interface as follows

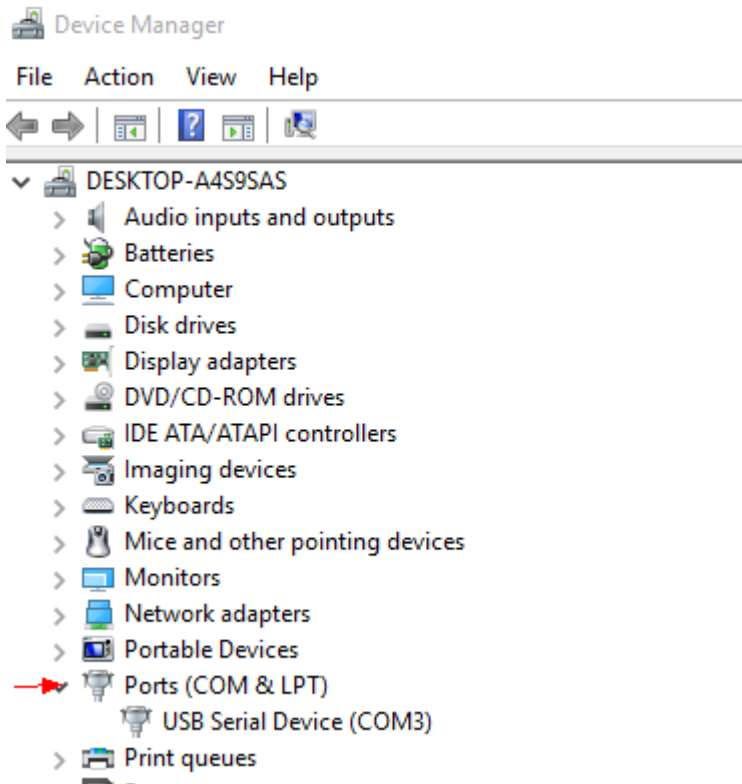




1.3 Post-Installation Check

Check the driver is successfully installed or not

When Geomative can not connect successfully, " win + R " run devmgmt.msc view Device Manager or right click on "My Computer" □ Select "Manage" □ see "Device Manager" whether there is a virtual serial port device or not. See as picture.



There are following three device identification that drive the installation is normal, should plug usb or restart GD-20 to trial whether restore the normal connection or not.

1.

1. 
2. 
3. 

Note: In the installation of the bottom software driver, due to the different operating systems and a variety of different environments may make the installation of the drive abnormally. Such as installation failed or GD-20 can not be correctly identified by the computer, finding questions and solutions as Section 8.1, "Geomative studio Installation Exception Handling".

1.4 Geomative Studio Installation Exception Handling

Frequently Uninstalled Condition

Geomative can not connect success and win+R→run devmgmt.msc to check the device manager, can not find the corresponding serial device, or equipment problems, mainly the following two kinds of installation is not successful:

Figure a is the driver is not installed successfully, Need to retry Geomative installation, if not successful, please check the commonly used solution.

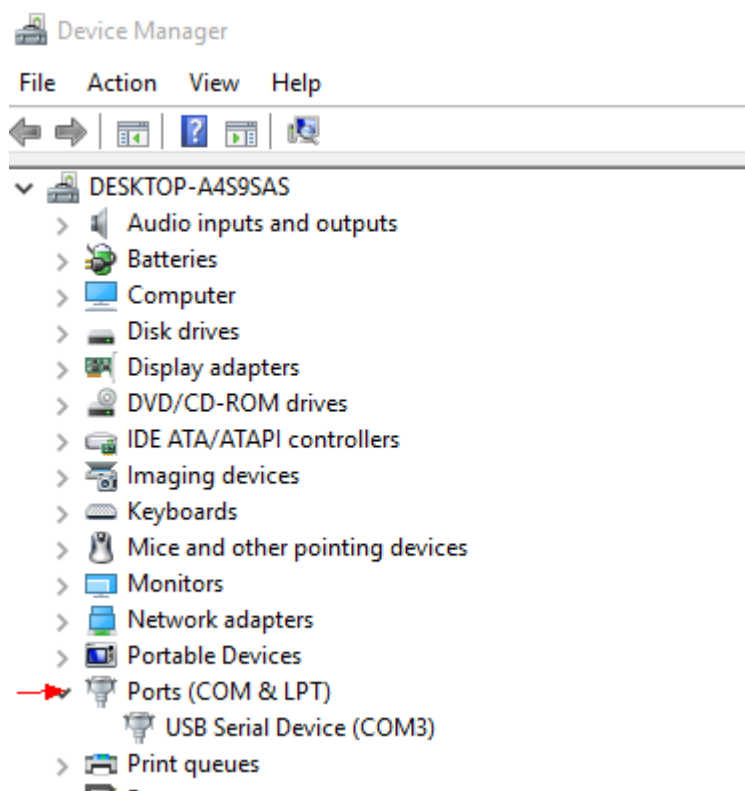


Figure a:

As shown in Figure b and Figure c, for the driver has been installed, but affected by the system configuration can not be used normally, please see the following description of the various phenomena and specific solutions

Figure b:

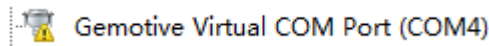
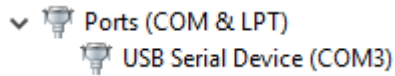


Figure c:

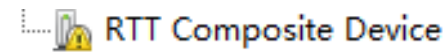


Common Solution

Digital signature problem

Geomativecan not connect success and win+R→run devmgmt.msc to check the device manager,or right-click “My computer” →select”Manage”→check”device manage”,Find the driver is not installed successfully (Figure a and Figure b),right-click to select "update the driver software (p)", as shown in Figure c,

Figure a:



Figureb:

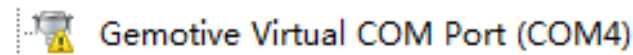
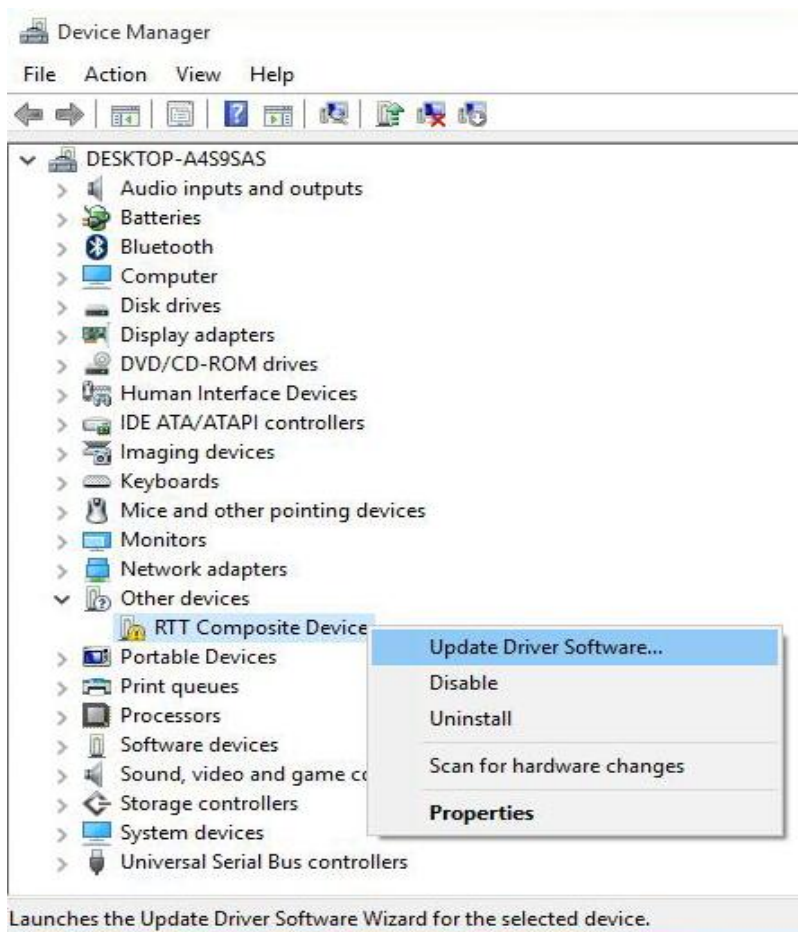
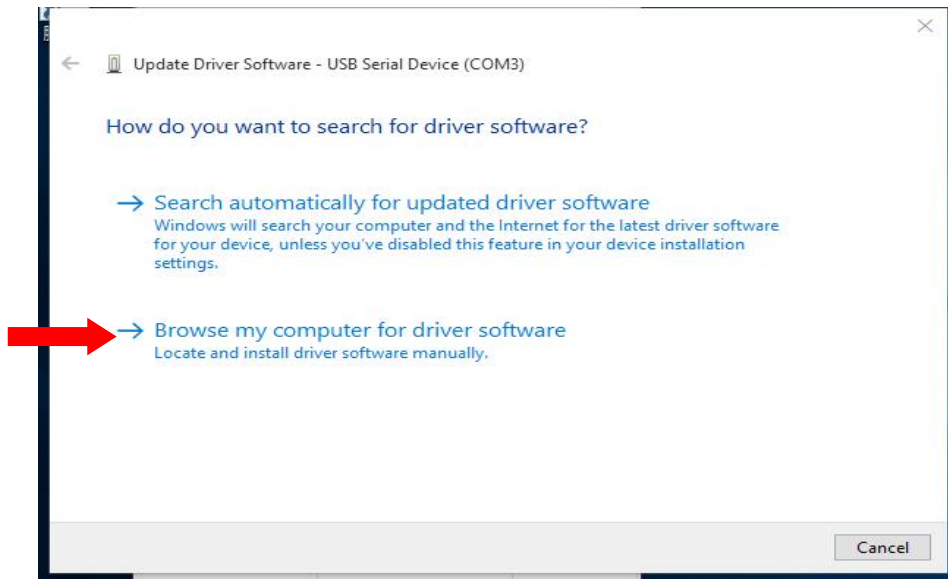


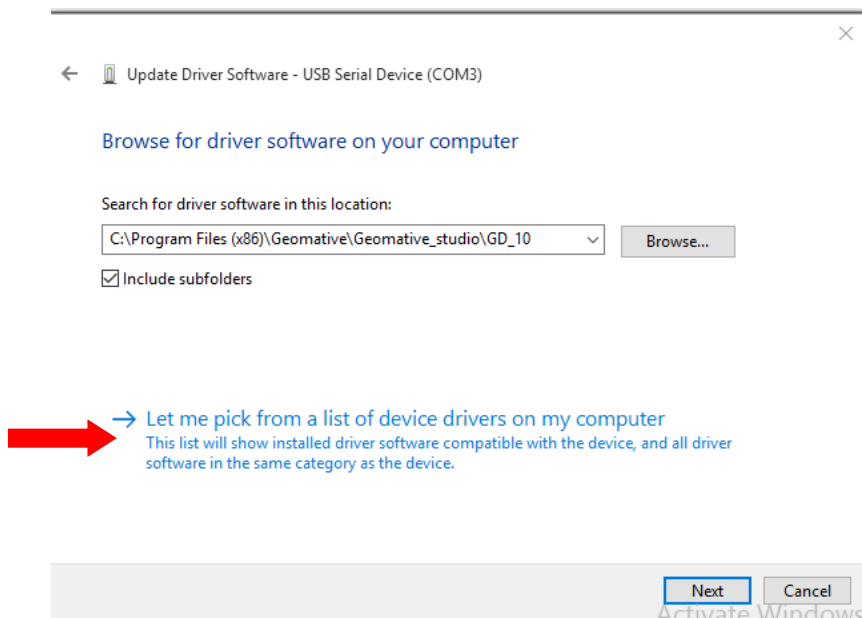
Figure c:



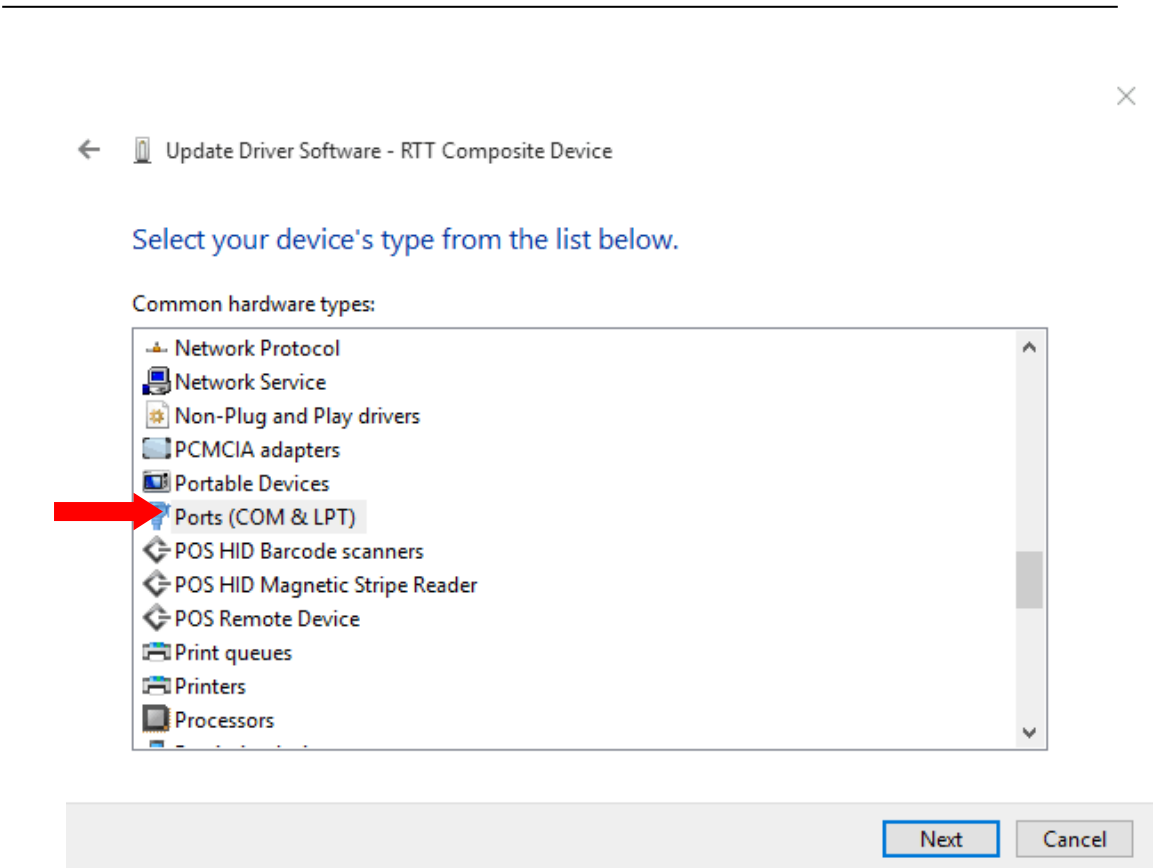
Select "browse the computer to find the driver software", as shown below



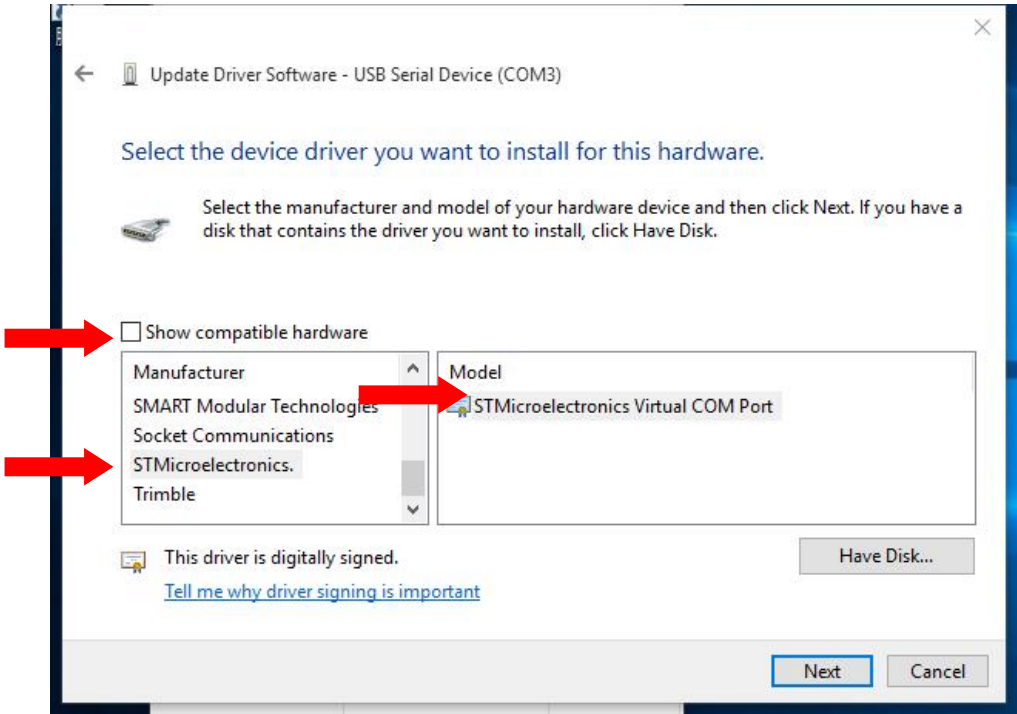
Select "To Select (L) from the list of the device drivers for your computer"



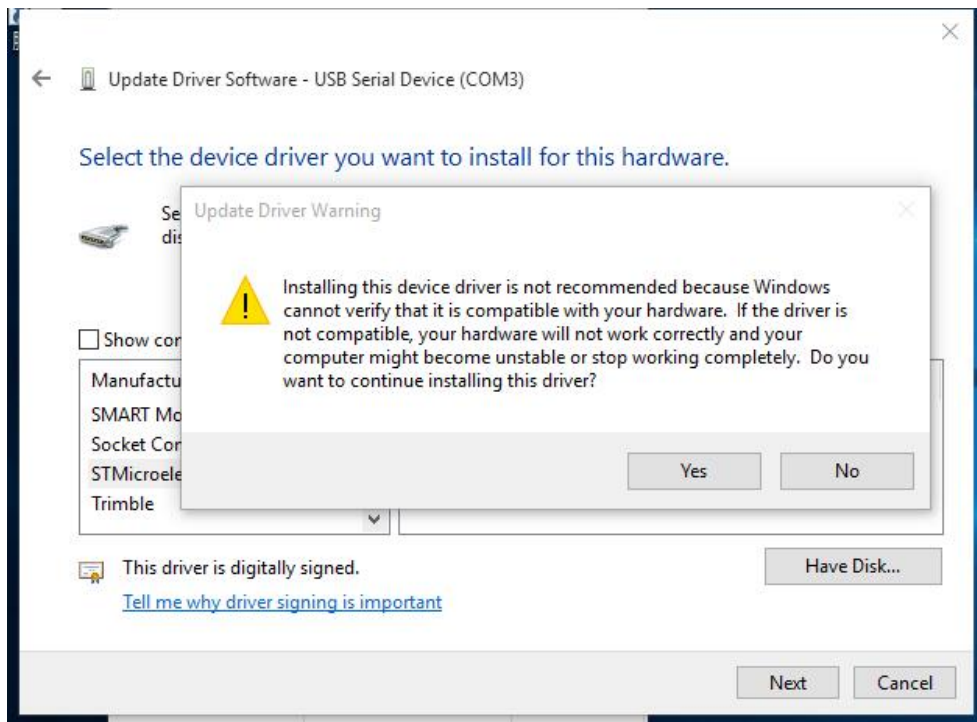
Find the serial device, if the following figure does not appear, please skip this step.



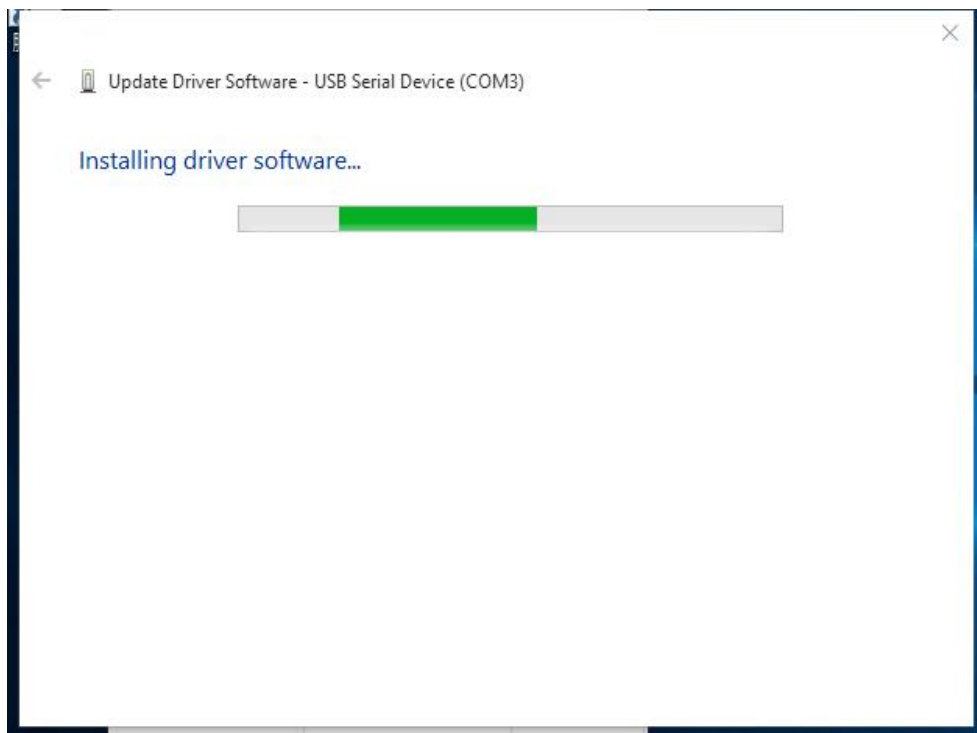
Remove the "Show Compatible Hardware" tick, find "STMicroelectronics Virtual COM Port", click Next.

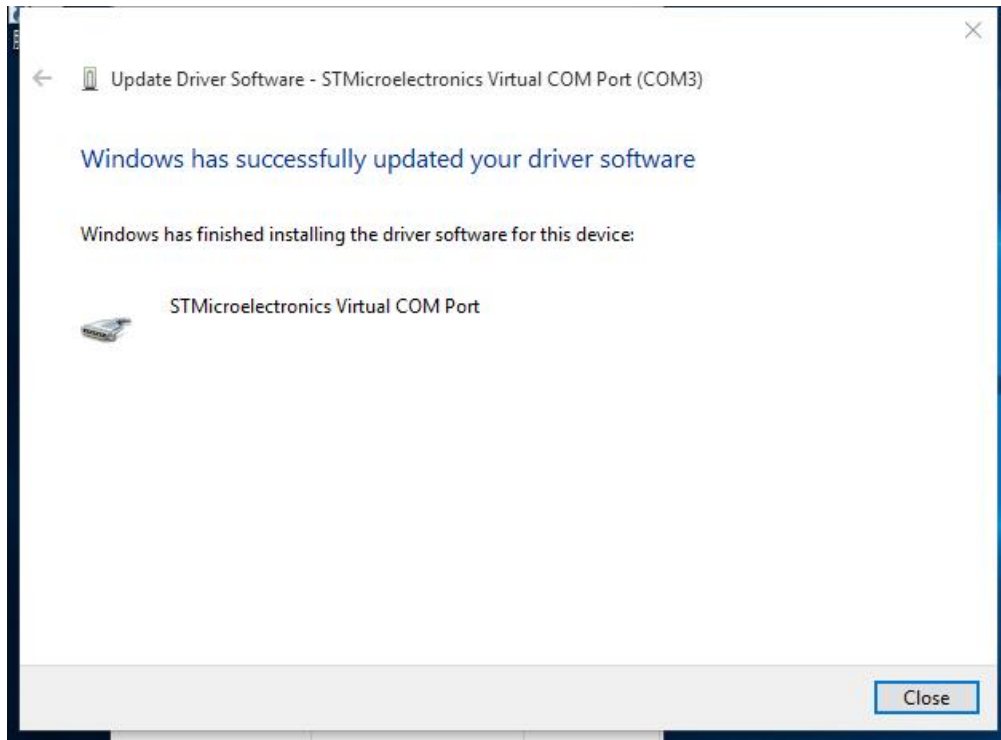


Alarm box select "Yes",

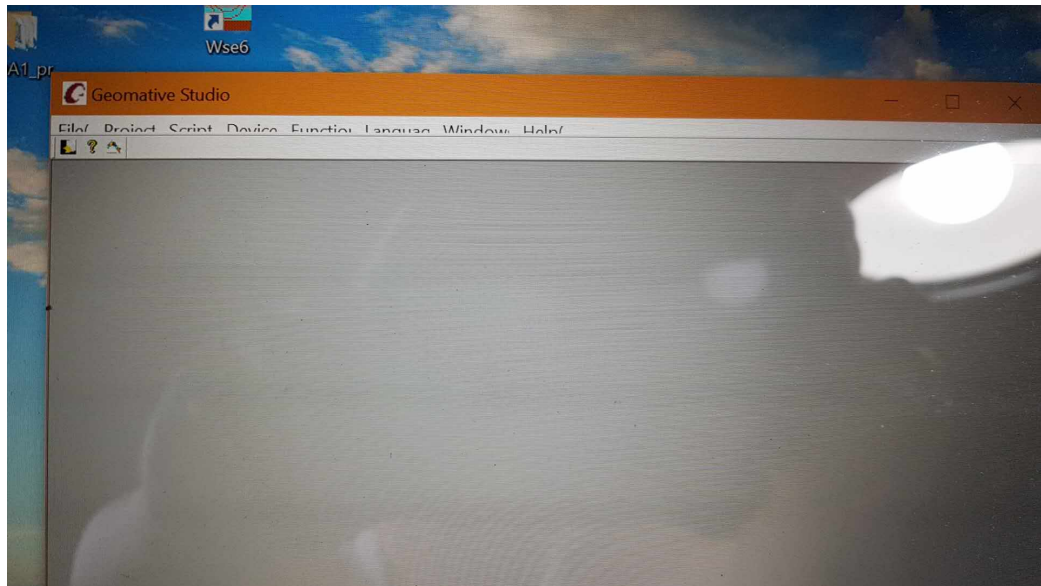


At this point to drive update, update completed as shown below, indicating that the installation is complete.

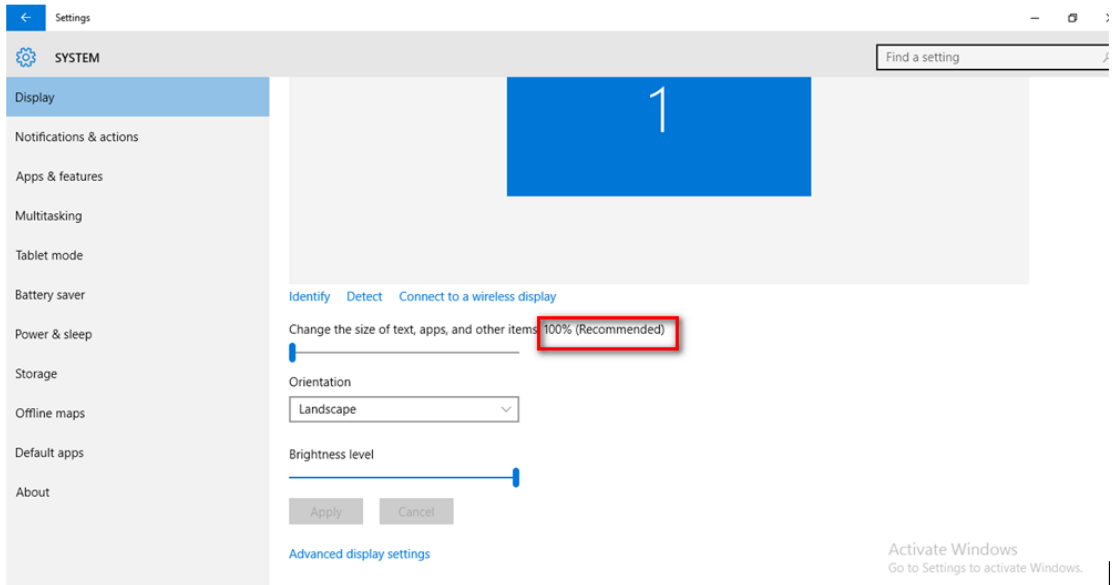




1.5 Exception Display of Geomative studio



1. Right click on my desktop, and select "Display settings", Display as below:
Set the size of text, apps and other items to 100%.



2、 Then Open the Geomative Studio again。

